

SURVEY

# ST. LOUIS MONEY & LOVE

DATE

Wednesday, September 6, 2017



# Demographics

Total responses

**150**

Age groups

**18 - 24 (22.0%), 25 - 34 (40.67%), 35 - 44 (19.33%), 45 - 54 (12.0%), > 54 (6.0%)**

Country

**United States**

Gender

**Female (66.67%), Male (33.33%)**

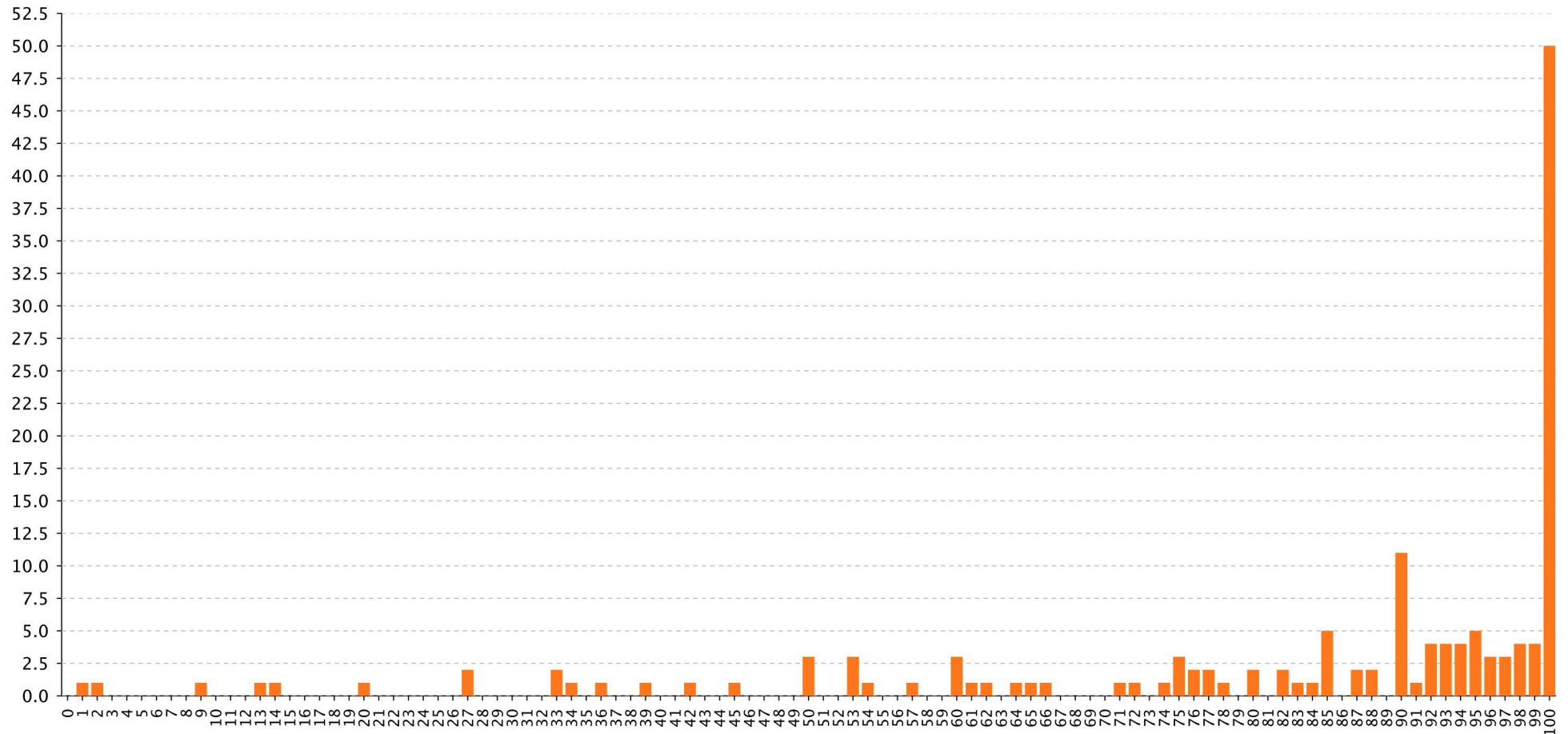
Marital status

**Living with partner, Married**

Q1

TYPE: SLIDER (0 - 100 SCALE)

On a scale of 0 (very unhappy) to 100 (very happy), how happy are you in your relationship?



TOTAL UNIQUE RESPONDENTS 150

Q2

TYPE: RANKING

**How do these factors contribute to stress on your relationship? Please rank from most stressful to least stressful.**

#	ANSWERS	1	2	3	4	5	6	MEAN
A1	Money	53	15	14	23	20	25	3.1
A2	Annoying Habits	10	43	30	34	21	12	3.3
A3	Poor Communication	27	20	31	32	23	17	3.4
A4	Sex (or lack thereof)	19	29	24	21	33	24	3.6
A5	Parenting	30	21	21	13	21	44	3.7
A6	Conflicting Schedules	11	22	30	27	32	28	3.9

TOTAL UNIQUE RESPONDENTS 150

Q3

TYPE: SINGLE SELECTION

**Do you feel your spouse/significant other has the same approach to money and budgeting as you?**

#	ANSWERS	PERCENT	COUNT
A1	Yes	51.33%	77
A2	No	48.67%	73

TOTAL UNIQUE RESPONDENTS 150

Q4

TYPE: SINGLE SELECTION

## Have you argued with your partner over a money related issue?

#	ANSWERS	PERCENT	COUNT
A1	Yes	65.33%	98
A2	No	34.67%	52

TOTAL UNIQUE RESPONDENTS 150

Q5

TYPE: MULTIPLE SELECTION

### Which of these money issues (if any) have you and your partner argued over?

#	ANSWERS	PERCENT (RESPONDENTS)	PERCENT (ANSWERS)	COUNT
A1	Frivolous purchases	31.33%	29.19%	47
A2	Household budgeting	34.00%	31.68%	51
A3	Credit card debt	19.33%	18.01%	29
A4	Insufficient emergency savings	16.00%	14.91%	24
A5	Insufficient retirement savings	6.67%	6.21%	10

TOTAL UNIQUE RESPONDENTS 150

Q6

TYPE: SINGLE SELECTION

**Do you have any bank accounts or credit cards that your spouse does not know about?**

#	ANSWERS	PERCENT	COUNT
A1	Yes	13.33%	20
A2	No	86.67%	130

TOTAL UNIQUE RESPONDENTS 150



Q7

TYPE: SINGLE SELECTION

**Do you typically consult your significant other or spouse before making large purchases (\$500 or more)?**

#	ANSWERS	PERCENT	COUNT
A1	Yes	83.33%	125
A2	No	16.67%	25

TOTAL UNIQUE RESPONDENTS 150

Q8

TYPE: SINGLE SELECTION

## Have you spent \$500 or more in the last year without telling your spouse/significant other?

#	ANSWERS	PERCENT	COUNT
A1	Yes	12.67%	19
A2	No	87.33%	131

TOTAL UNIQUE RESPONDENTS 150

Q9

TYPE: SINGLE SELECTION

## Have you ever lied to your spouse or significant other about the cost of a purchase?

#	ANSWERS	PERCENT	COUNT
A1	Yes	30.67%	46
A2	No	69.33%	104

TOTAL UNIQUE RESPONDENTS 150

## Q10

TYPE: SINGLE SELECTION

### Who saves more money?

#	ANSWERS	PERCENT	COUNT
A1	Me	44.67%	67
A2	My partner or significant other	19.33%	29
A3	We save equally	36.00%	54

TOTAL UNIQUE RESPONDENTS 150

## Q11

TYPE: SINGLE SELECTION

### Who spends more money?

#	ANSWERS	PERCENT	COUNT
A1	Me	27.33%	41
A2	My partner or significant other	36.00%	54
A3	We spend equally	36.67%	55

TOTAL UNIQUE RESPONDENTS 150

## Q12

TYPE: SINGLE SELECTION

### Do you believe your spouse or significant other overspends?

#	ANSWERS	PERCENT	COUNT
A1	Yes	42.67%	64
A2	No	57.33%	86

TOTAL UNIQUE RESPONDENTS 150

### Q13

TYPE: RATING STARS

## How would you rate your knowledge on managing finances?

#	ANSWERS	PERCENT	COUNT
A1	1	2.67%	4
A2	2	3.33%	5
A3	3	27.33%	41
A4	4	38.67%	58
A5	5	28.00%	42

TOTAL UNIQUE RESPONDENTS 150

## Q14

TYPE: RATING STARS

### How would you rate your spouses knowledge on managing finances?

#	ANSWERS	PERCENT	COUNT
A1	1	6.67%	10
A2	2	12.00%	18
A3	3	26.00%	39
A4	4	32.67%	49
A5	5	22.67%	34

TOTAL UNIQUE RESPONDENTS 150